

RENOVATE

A ski chalet reaches new heights of design and practicality

July takes us to the snow of Victoria's Mount Hotham and one family's luxurious winter retreat, renovated just in time for the winter season. The project was pushed through in conjunction with its sister property next door, which was similarly updated in a functional yet warmly welcoming style. Turn the page for more of this impressive holiday home.





DREAM IT. DESIGN IT. DO IT.

SNOW HOME

The challenges of a renovation in Victoria's alpine region were overcome in an epic 12-week run

Every now and then, a project comes along that challenges and defies all logical time frames. That was the case for this three-storey alpine chalet in Victoria's Hotham Heights. With the ski season fast approaching, its new owners gave themselves a mere 12 weeks to make it snow-bunny gold.

Melbourne couple Joe and Olivia Bartolo had jumped at the chance to purchase in 2018 when the previous owners agreed to sell. The keen skiers and their two school-aged children had admired the property for several years and wanted to establish their own private base in the area.

Dictated to by the harsh weather and limited access to trades and materials, Joe and Olivia had a three-month window in which to complete the renovation, from the planning stage through to the decorative fitout. They turned to interior designer Jessica Bettenay of Resident Avenue for expert help. "Engaging Jess and her team meant the project was impeccably designed, to within an inch of its life, even when it was down to the wire!" says Joe.

WORDS & STYLING JULIA GREEN PHOTOGRAPHY ARMELLE HABIB

cheat sheet

Who stays here Joe Bartolo, managing director of Incore Developments; his wife Olivia, group corporate services director of Incore Developments; and their children: Milla, 9, and Kayden, 12.

Style of home The three-storey 1990s chalet on Mount Hotham, Victoria, was given a contemporary update.

🕒 From start to finish, the renovation took three months.

\$\$\$\$ The budget for this project was approximately \$500,000.



living area

The new Oblica 'Shaker' fireplace is a sophisticated way to combat the cold. Texture was introduced via an Ay Illuminate pendant light from Spence & Lyda and patterned rug from Bayliss. The sofa, cushions and side tables are from Jardan.

DREAM IT

From the moment the property settled, planning commenced to transform the chalet's dated interior and impractical layout into a contemporary winter haven offering both functionality and sophistication. "We wanted the family to unwind, relax and engage together the moment they set foot inside," says senior designer Jessica, who oversaw the space planning and interior design of the entire project. "Our aim was to create warmth with the use of texture and depth of colour. The space needed to be the very opposite of its icy surroundings, and encourage relaxation after a day on the slopes."



kitchen/dining area

A custom-designed bench with attached dining table by Resident Avenue is the feature element of this space-smart zone. Otto benches from Jordan complete the setting. Flamed black Zimbabwe granite benchtops. Smartstone Statuano venato splashback and Elton Group Evenex veneer joinery. The *Clouds I* artwork by Matt Johnson echoes the view.



entry

This handy spot at the entry now has a bench seat with a waterproof neoprene cushion plus storage for walking boots and Design By Them hooks to hang coats and jackets. Wall sconce, Porcelain Bear.



living area

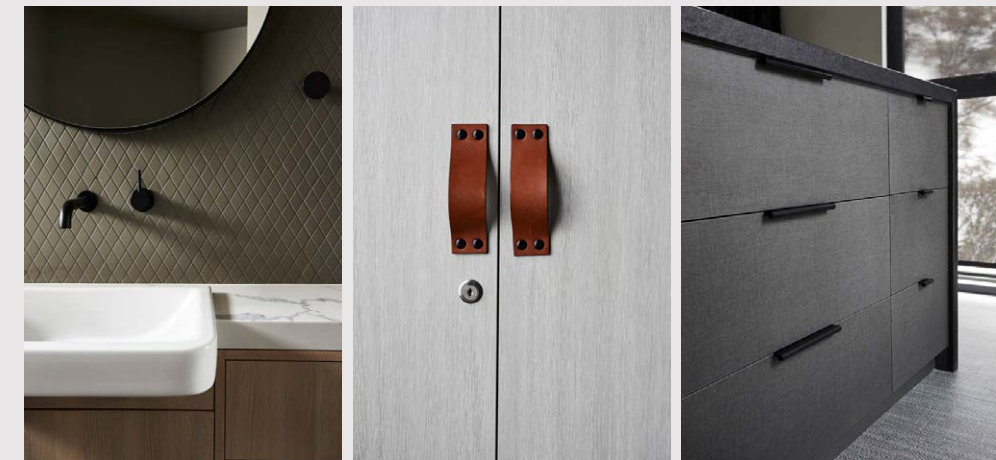
Design elements such as custom joinery (for firewood storage and display) and floating shelves from Fenton & Fenton maximise the compact space. A mix of cushions from Jordan adds yet another layer of comfort.

ARTWORK (OPPOSITE PAGE, RIGHT) BY STEPHANIE KLOSS

Joe and Olivia's wishlist

- + Bring in some warmth** through plush materials and interesting textures, as well as luxurious additions such as underfloor heating.
- + Add practical inclusions** that make for a hassle-free transition from a physically active day on the slopes to a relaxing evening in front of the fireplace.
- + Maximise the views** with living spaces in a smart and contemporary style that complements the home's surroundings.

the moodboard



FROM LEFT Semi recessed 590mm LVA405 sink, \$499, Studio Bagno. Leather O1 tan handles, \$22 each, MadeMeasure. Admira laminate in Obsidian Linen, POA, Bench Top City.



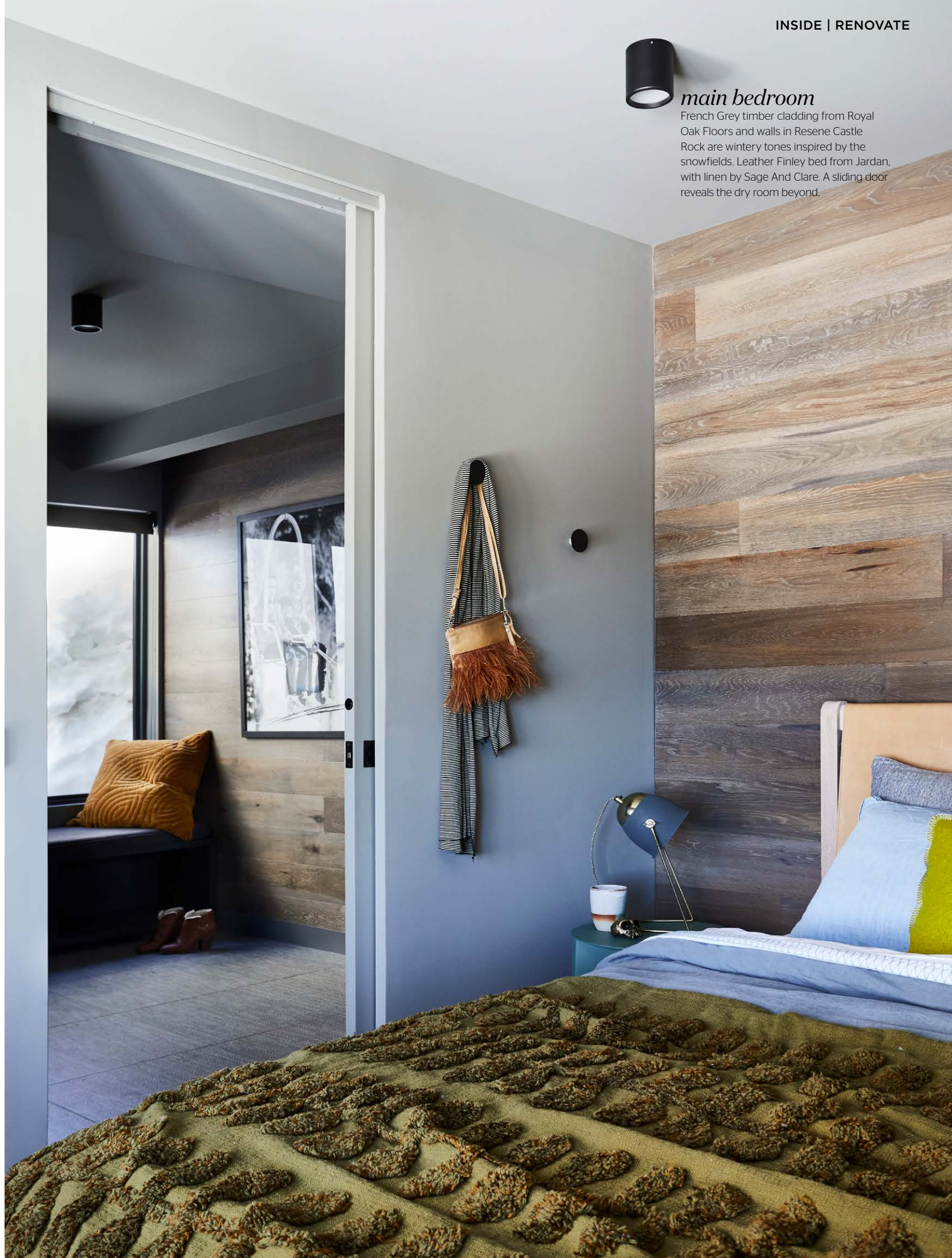
bathroom

Diamond porcelain tiles from Urban Edge Ceramics form a great backdrop for the vanity and Middle Of Nowhere mirror. The shower tiles were also sourced from Urban Edge Ceramics. Black taps and shower, Astra Walker.



main bedroom

French Grey timber cladding from Royal Oak Floors and walls in Resene Castle Rock are wintry tones inspired by the snowfields. Leather Finley bed from Jordan, with linen by Sage And Clare. A sliding door reveals the dry room beyond.



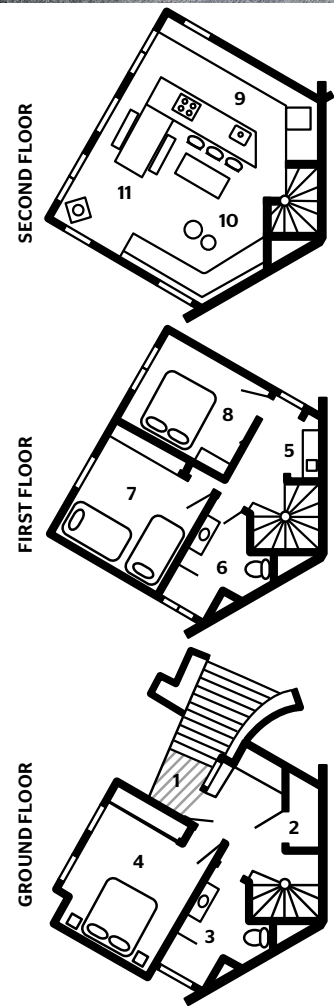
DESIGN IT

In order to provide the family with user-friendly holiday accommodation, each of the three floors and their rooms were reconsidered. The ground floor was reconfigured to include a dry room and a more functional entry with seating and storage, and two bedrooms on the first floor were redesigned to allow for separate access and wardrobe space. On the top floor, the kitchen and living spaces were swapped around to capitalise on the vast alpine views surrounding the chalet.

On every level, designer Jessica realised her vision of warm, textured interiors with finishes that included three-dimensional porcelain floor tiles from Urban Edge Ceramics, and some walls clad in French Grey engineered timber boards from Royal Oak Floors, with others painted Resene Castle Rock, a colour chosen for its natural grey-green tone and depth.

In the newly reconciled cooking zone, a pair of polished material options brought refinement to the space: flamed black Zimbabwe granite on the custom-designed bench, and contrasting light-toned Smartstone Statuario Venato on the splashback.

“Black taps and dark timber furniture enhance the drama and add even more modern sophistication to the home,” says Jessica, adding that its holiday vibe is down to the soft finishing touches. “The combinations of leather, fur and velvet are the layers that create the textural result,” she explains.



- 1 Entry
- 2 Dry room
- 3 Bathroom
- 4 Main bedroom
- 5 Laundry
- 6 Bathroom
- 7 Kids' bedroom
- 8 Guest bedroom
- 9 Kitchen
- 10 Living area
- 11 Dining area

BATHROOM TOWELS, BEDOUIN SOCIETE



living area

Tantalising views of Mount Hotham are framed by the new aluminium windows. The family's Bang & Olufsen BeoPlay A9 is perfect for chill-out sessions.



dry room

The Robert Redford print on the wall is a fun nod to the purpose of this room, which handles all manner of cold-weather gear with grace. Cushion, Sage and Clare.

bright idea

A bank of windows is brilliant for framing a view, but when you want to reduce glare and/or trap heat, a blackout roller blind is ideal. Check out the latest ranges at Wynstan, wynstan.com.au

the best bits

- + **Curated materials** Timber-cladding on the walls, three-dimensional wall and floor tiles, and joinery crafted from a textured veneer make for a tactile combination of surfaces.
- + **Fireplace** A freestanding Oblica fireplace fuses function with modern style, making it the perfect choice for a winter escape.
- + **Location** As the chalet is situated right on Mount Hotham's Big D ski run, hitting the slopes is simply a matter of walking out the back door and putting on skis.

DO IT

Early-season snowfall in 2018 meant that accessing trades and materials was even more challenging than usual. To ensure the project moved forward, some of the building works were completed out of sequence, requiring clever project management.

"We stripped the property back to its frame because the window frames were rotting and the chalet was in desperate need of help," says Joe. "Then we rearranged walls and changed ceiling heights, and the orientation of all the wet areas. To beat the snow, the joinery went in after the carpet was installed and the furniture was delivered. When we started decorating we didn't even have the joinery and benchtops in. The painting was completed well before we would normally do it as the temperature was dropping and we were struggling to get the paint to dry."

Another factor influencing the outcomes was the narrow staircase. To counter this, the big sofa in the living room was designed by Resident Avenue in two pieces so it could be easily carried up the stairs to the top floor.

Local manufacturer Jordan provided much of the additional furniture, and every item in the chalet – right down to tableware – was then handpicked to match. The initial objective was a welcoming winter retreat where family and friends could come together, and that was achieved in spectacular style. **ID**

For more details of Jessica's work, visit residentavenue.com.au

lessons learnt

"Every limitation, detail and measurement was considered right from the beginning. There was no time for mistakes or change of mind on a project like this. It was a matter of do it once and do it properly"

JESSICA BETTENAY, SENIOR DESIGNER